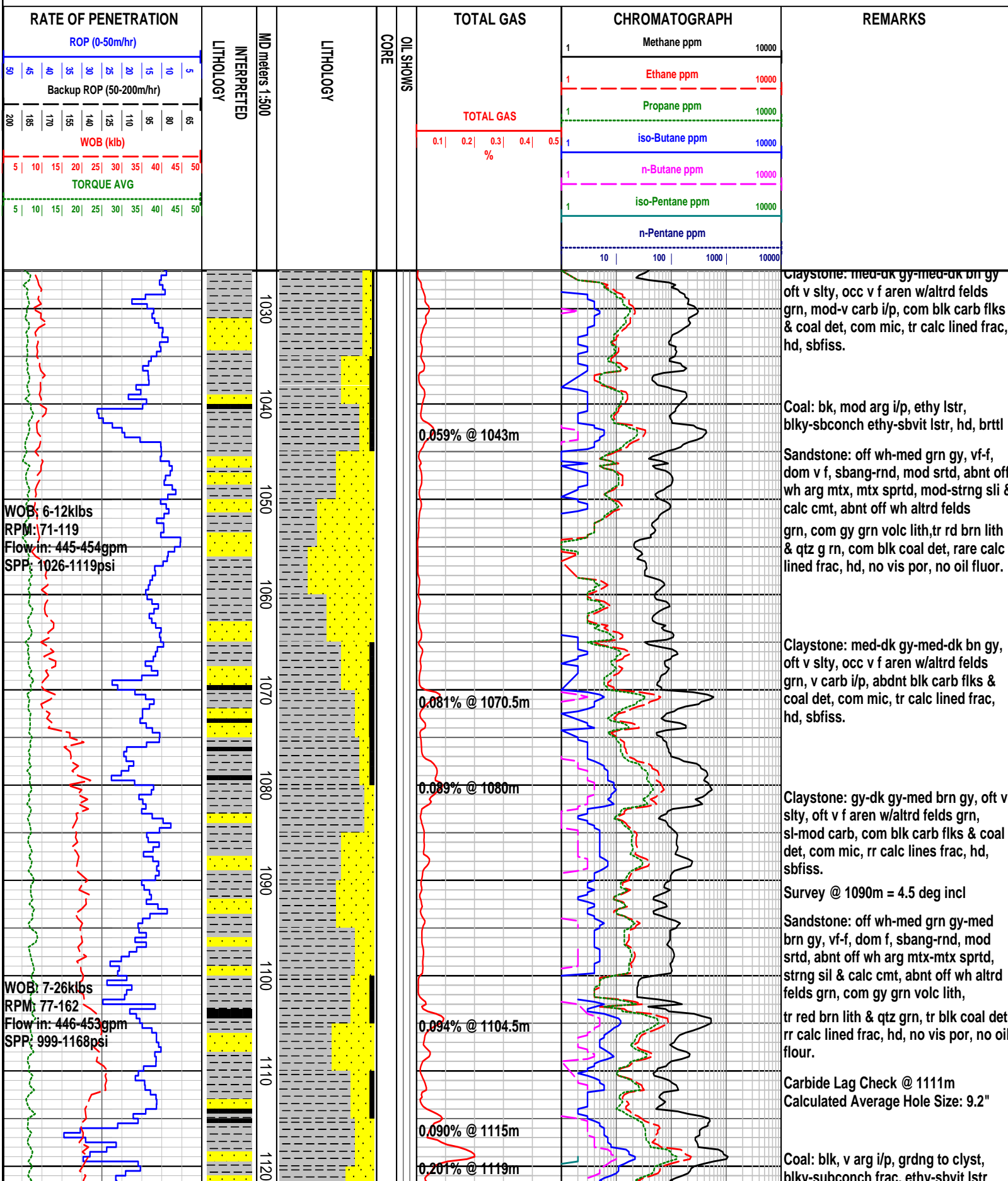
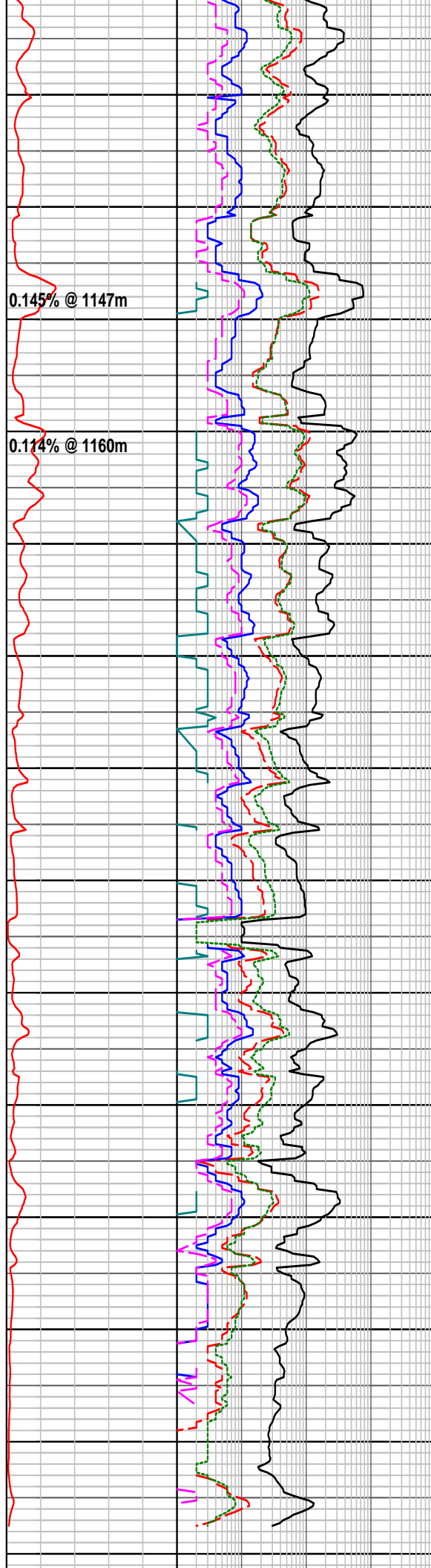
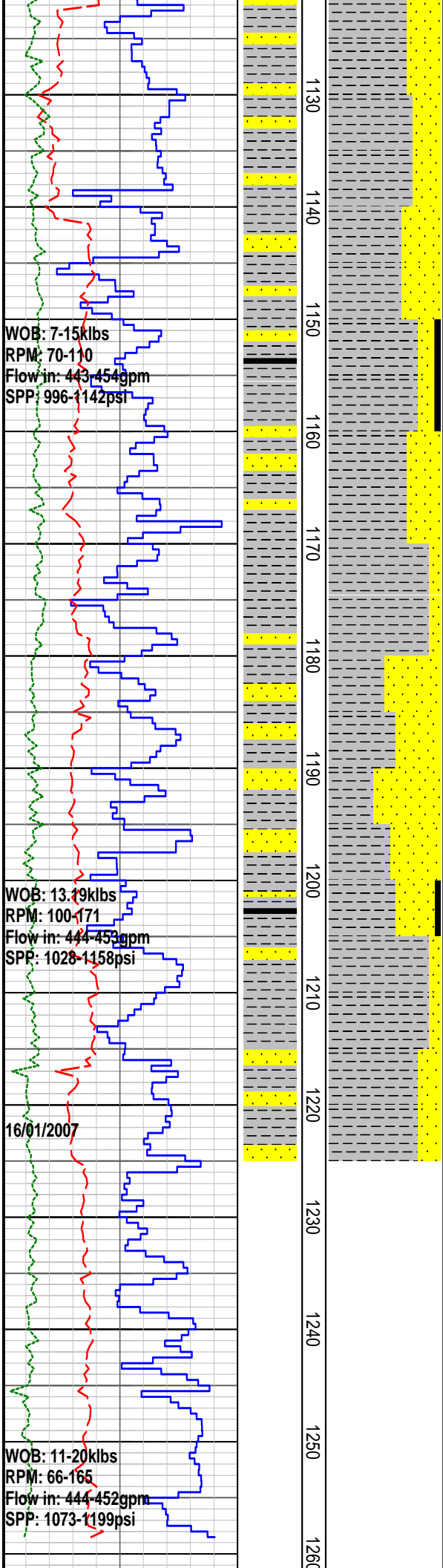


# FORMATION EVALUATION LOG





Claystone: gy-dk gy-med brn gy, oft v slty, oft v f aren w/altrd felds grn, sl-v carb, com blk carb flks & coal det, com mic, rr calc lines frac, hd, sbfiss.

Sandstone: off wh-med grn gy, vf-f, dom f, sbang-rnd, mod srted, abnt off wh arg mtx-mtx sprtd, strng sil & calc cmt, abnt off wh altrd felds grn, com gy grn volc lith, tr red brn lith & qtz grn, tr blk coal det, rr calc lined frac, hd, no vis por, no oil flour.

Sandstone: off wh-med grn gy, vf-f, dom f, sbang-rnd, mod srted, abnt off wh arg mtx-mtx sprtd, strng sil & calc cmt, abnt off wh altrd felds grn, com gy grn volc lith, tr red brn lith & qtz grn, tr blk coal det, rr calc lined frac, hd, no vis por, no intergranular oil flour.

Fluorescence (1170-1180m): the calc frac infill matl has 5% mod brt-brt ptchy lt yel-wh flour, wk dull mlky wh crsh cut, tr res.

Survey @ 1193m = 5.75 deg incl

Coal: blk, v arg i/p, grdng to clyst, blkly-subconch frac, ethy-sbvit lstr, hd, brit.

MWIN:8.65ppg Mud temp:48deg  
PV/YP:16/18FV:50Gels:2/3  
Solids:1.9% pH:9.2

Claystone: gy-dk gy-med brn gy, oft v slty, oft v f aren w/altrd felds grn, sl-v carb, com blk carb flks & coal det, com mic, rr calc lines frac, hd, sbfiss.

